

DOORS 2 SUCCESS

The importance and the impact of stable housing

At any given moment, an average of **2,000 households or over 3,250 people in Mesa County** rely on housing, rental assistance and the supportive services provided through the Grand Junction Housing Authority (GJHA) and Doors 2 Success.

Approximately 45% of these households are comprised of families led by adults faced with low wages, employment or training barriers, physical or mental health challenges, substance abuse and/or have criminal backgrounds. **One unfortunate event—a health incident, job loss—puts the family's housing at severe and immediate risk.**



Doors 2 Success empowers participants of Grand Junction Housing Authority programs, in partnership with community organizations, by promoting stable housing through supportive services tailored to individual and household needs.



How we're organized and funded

Doors 2 Success is both a section 501c3 nonprofit and a section 509a3 supporting organization to GJHA. We do not employ staff; program delivery and administration are provided by GJHA. Our board, which is appointed by and collaborates with GJHA, plays an active role in fundraising to augment supportive services programs.

Doors 2 Success has averaged \$121,724 in annual revenue over the past three years. Revenue sources include in-kind contributions, grants, back donations, and individual and business donations. We're proud that nearly 10% of the GJHA Supportive Services budget is provided by Doors 2 Success and that approximately 85% of every dollar donated goes directly to serve clients.

96%

is the average percentage of older adults and families served by Doors 2 Success who are able to maintain stable housing and were successful in their pursuit of other program-specific objectives

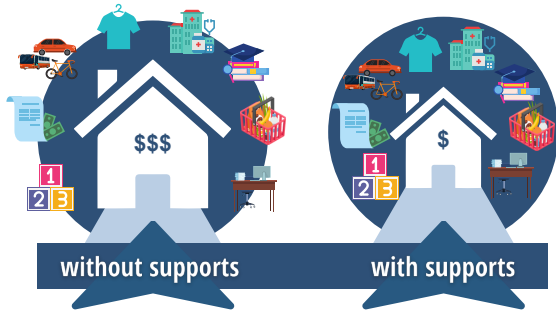


Scan here to financially support Stable Housing in Mesa County



Who we serve

Since its founding in 2008, Doors 2 Success has helped vulnerable populations, ranging in age from infants to over 90 years old, enhance their housing stability, self-sufficiency, and overall wellness. Racial demographics are generally reflective of the diversity of Mesa County, with Doors 2 Success serving slightly higher proportions of Hispanic (10%) and other communities (6%). Two-thirds of people served identify as female, many of whom are a single head of household. 2.5% adults served self-report as lesbian, gay, bisexual, transgender and/or queer.



The vast majority of people living in GJHA homes have household incomes at or below 50% of Area Median Income (AMI), which was \$42,400 for a three-person household in 2024. Monthly rent for a two-bedroom house or apartment in Mesa County averages close to \$1,500—which means for the majority of our participants, roughly 42% of this household’s available funds each month is going to housing alone.

Through lower-cost housing options and supportive services provided by Doors 2 Success and GJHA, **clients are more able to address and sustain their entire budget** (e.g., groceries, health care, transportation, clothes), **which increases stability, self-sufficiency, and overall wellbeing.**

People finding their unique door to success

Brigette (top right) was once homeless and things were so tough she didn’t think it was possible to be where she is now—in a stable home with her three, thriving kids. In addition to GJHA housing assistance, she received case management through Doors 2 Success’ Family Self Sufficiency (FSS) program, which helped her find a job to provide steady income. Working her way up to a manager position, she is now paying her full rent, achieving self-sufficiency. Thanks also to a unique component of the FSS program—the escrow account option, which helps capture rental assistance savings as income increases and need decreases—Brigette will soon become a homeowner. She accrued \$28,813 in earned escrow to aid in the down payment of a home, further securing stability for her and her family.



“Sue” (bottom right) needed hearing aids. Having been set up with a new health insurance plan earlier in the year, her Service-Care Coordinator and Doors 2 Success team were able to find a suitable in-network provider, thus avoiding paying more than three times as much with an out-of-network office, coming in under \$1,800 for a pair (versus \$6,000). But the story doesn’t stop there. They also acquired a grant to put the total cost in a more affordable range. Using the trust built over their years-long relationships, Sue and her team openly and effectively navigated what can be a complex health system, resulting in obtaining adaptive equipment that positively impacts every moment of her life.



“I am so grateful for the help to get affordable hearing aids. There is no way I could have gotten them otherwise. They have made such a huge difference for me.”



Stories like this are **made possible through partnership with our community**—service organizations, funders, businesses and individual citizens. We are very proud of how much support Doors 2 Success has been given by our local champions. Visit doors2success.org/who-supports-us to learn more about who we’ve partnered with, and how you can get involved, too!

